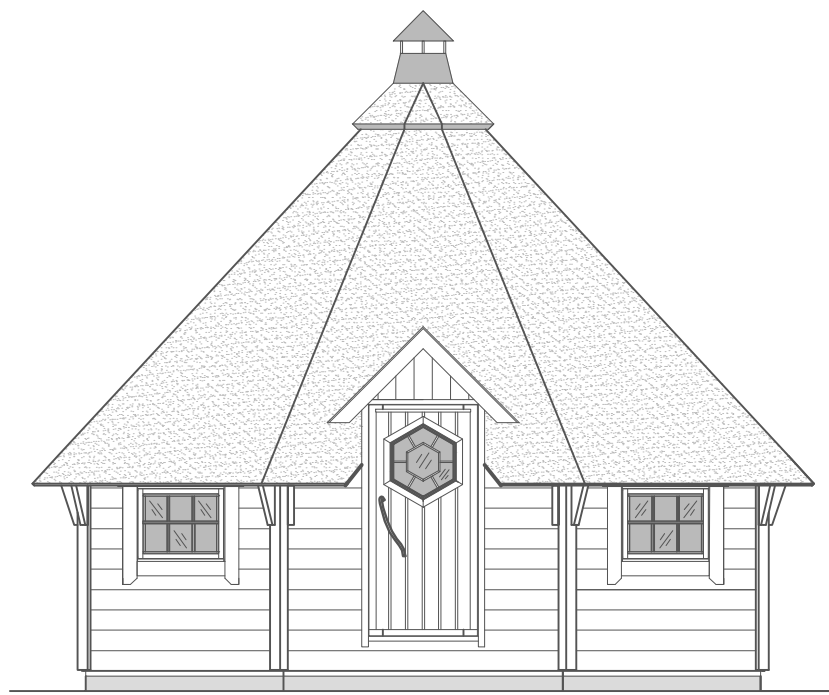
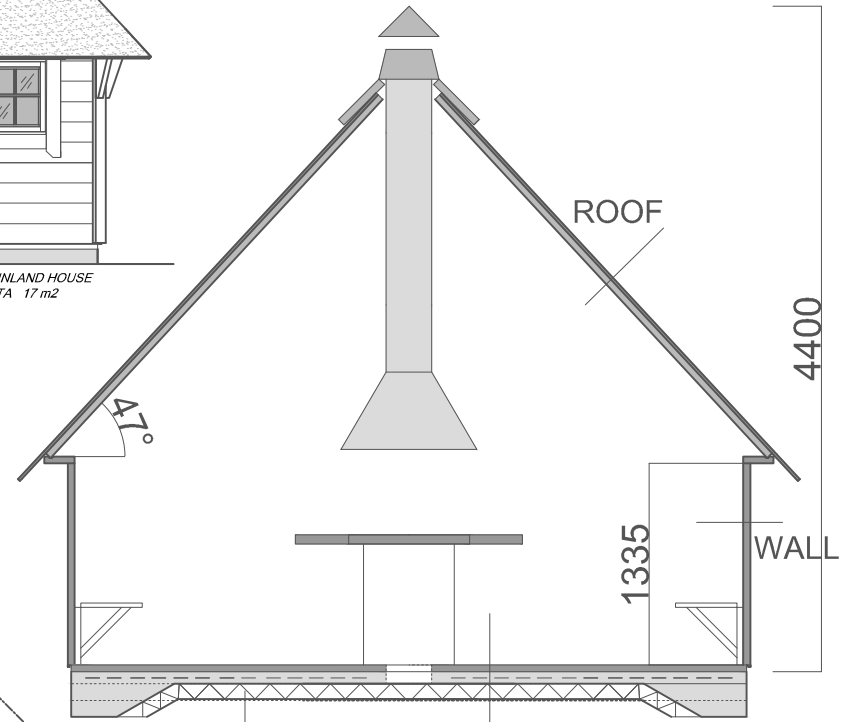


GRILLKOTA 17 m²



ARCTIC FINLAND HOUSE
GRILLKOTA 17 m²



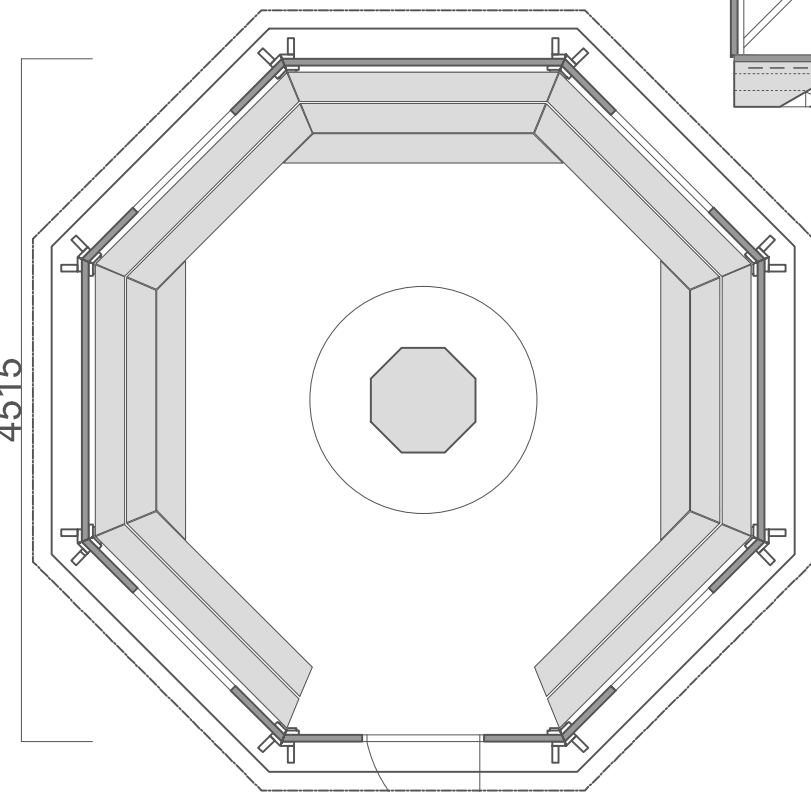
ROOF

WALL

FLOOR

ARCTIC FINLAND HOUSE
GRILLKOTA 17 m²

Air pipes for grill $\varnothing 110 \times 3$ (ventilation duct)



4515

1322

1870

1322

4515

ARCTIC FINLAND HOUSE
GRILLKOTA 17 m²

ROOF

Roofing felt
Panel 18 x 145
Frame 45 x 45

WALL

Timber panel 45 x 145

FLOOR

Concrete slab 80 mm
Steel mesh embedded in concrete slab
(B500K 4-150)
Cellular plastic / styrofoam 100 mm
Compacted gravel 200 mm (0-16 mm)
Base frame 45 x 95 pressure impregnated
(Bitumen felt under base frame)

GRILLKOTA 17 m ²	Drawings 1:50
ARCTIC FINLAND HOUSE Kaartotie 2, FIN-33950 Pirkkala P. 010 420 1230 arctic@arcticfinland.com	Christian Anttila (rkm)